

Incubation Trays

Convenient, easy to use trays for staining and washing gels and membranes

These specially designed **incubation trays** are ideal for staining and washing electrophoresis gels and membranes.

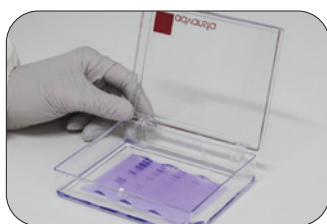
Chose from three designs, all available in a range of sizes:

- **Opaque** – for light-sensitive applications
- **Transparent** – for easy monitoring of colorimetric staining
- **Traditional** – perfect for blot washes and incubations

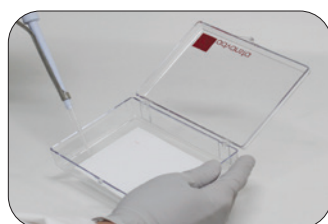


Advantages

- **SMOOTH INTERIOR** – protects membranes and gels from scratches
- **ATTACHED LID** – to protect experiments from dust or debris that can cause speckles on blot images
- **CONVENIENT** – multiple sizes available for different sizes of gels and blots
- **SAVE** – minimize antibody and buffer usage by using appropriately sized trays



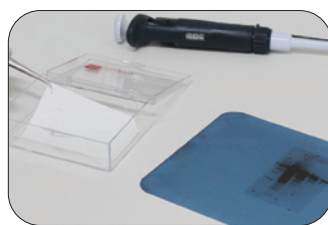
Easy visualization of staining



Tray lids protect from dust and debris that cause speckles on Western blots



Save antibody and buffer by using the smallest tray that can hold your blot



Beautiful Western blots every time

Advansta Solutions

Staining with a light-sensitive dye or doing a fluorescent Western?

Use Advansta's opaque incubation trays

- Protect your blot or gel from light
- No need to cover your tray with foil
- No need to keep your shaker in a darkened room
- Use for hybridization and washes of fluorescent microscope slides

Not sure when staining or destaining is complete?

Use Advansta's transparent incubation trays

- Easily observe staining
- Photograph your gel right in the tray

Incubation Trays

Convenient, easy to use trays for staining and washing gels and membranes



Ordering Information

| Catalog Number | Product | Size | Size |
|----------------|---|--------------|--------|
| L-07034-005 | Incubation Tray, Transparent body and lid | 5x7 cm | 5/pack |
| L-07038-005 | Incubation Tray, Opaque black body and lid | 5x7 cm | 5/pack |
| L-07031-005 | Incubation Tray, Traditional red body with clear lid | 5x7 cm | 5/pack |
| L-07035-004 | Incubation Tray, Transparent body and lid | 6x9 cm | 4/pack |
| L-07039-004 | Incubation Tray, Opaque black body and lid | 6x9 cm | 4/pack |
| L-07036-003 | Incubation Tray, Transparent body and lid | 9x11 cm | 3/pack |
| L-07040-003 | Incubation Tray, Opaque black body and lid | 9x11 cm | 3/pack |
| L-07033-005 | Incubation Tray, Traditional blue body with clear lid | 9x11 cm | 5/pack |
| L-07037-002 | Incubation Tray, Transparent body and lid | 10.5x15.5 cm | 2/pack |
| L-07041-002 | Incubation Tray, Opaque black body and lid | 10.5x15.5 cm | 2/pack |

Related Products

| | | | |
|-------------|--|-----------------------------------|-----------|
| K-12045-C20 | WesternBright® ECL Western Blotting HRP Substrate | Trial kit size | 20 ml |
| K-12045-D20 | WesternBright® ECL Western Blotting HRP Substrate | For 2000 cm ² membrane | 200 ml |
| K-12045-D50 | WesternBright® ECL Western Blotting HRP Substrate | For 5000 cm ² membrane | 500 ml |
| R-05071-500 | Goat-anti-mouse HRP-conjugated secondary antibody | | 500 µl |
| R-05072-500 | Goat-anti-rabbit HRP-conjugated secondary antibody | | 500 µl |
| L-08001-010 | Low-Fluorescence PVDF Transfer Membrane | 7x9 cm | 10 sheets |
| L-08002-010 | Nitrocellulose Transfer Membrane 0.45 µm | 8x10 cm | 10 sheets |
| L-08003-010 | Nitrocellulose Transfer Membrane 0.22 µm | 8x10 cm | 10 sheets |

Advansta Corporation

2140 Bering Drive | San Jose, CA 95131

Tel: 650.325.1980 | Fax: 650.325.1904 | Email: sales@advansta.com

Product information: www.advansta.com/products/incubation_trays

Copyright © 2010–2020 Advansta. All rights reserved. The Advansta logo and WesternBright® are registered trademarks of Advansta Corporation. All other trademarks, service marks and tradenames appearing in this brochure are the property of their respective owners.

www.advansta.com

