

# Protein Sample Loading Buffers

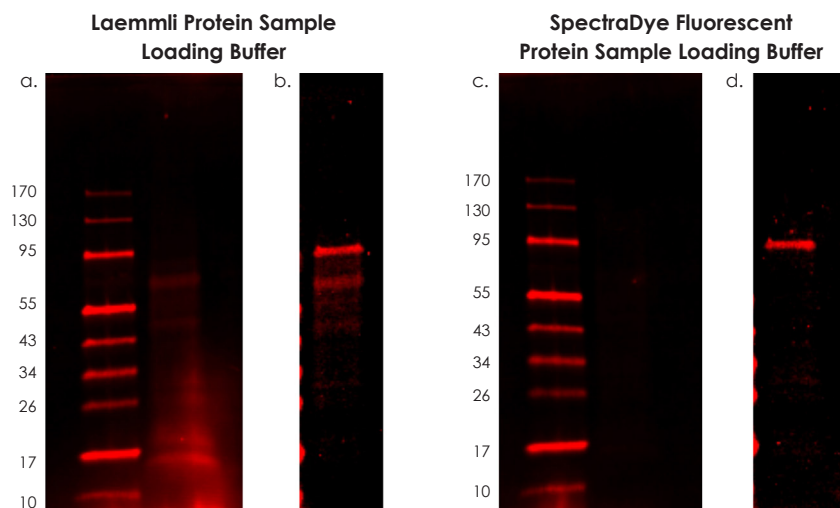
## Pre-mixed loading buffers for polyacrylamide electrophoresis

Avansta provides ready-to-use **Laemmli loading buffers** for the preparation of protein samples for SDS-polyacrylamide gel electrophoresis. Choose from reducing or non-reducing buffers; each contains an indicator dye, to enable visualization of the progress of electrophoresis by observing migration of the dye front. All loading buffers are compatible with downstream Coomassie and silver staining and Western blotting applications. SpectraDye™ fluorescent non-reducing protein sample loading buffer is ideal for fluorescent Western blotting applications that require minimal background in the Cy5 or IR700 channels.



### Advantages

- **CONVENIENT** – pre-mixed; just add your protein sample, boil and load
- **QUALITY CONTROLLED** – obtain reproducible results with standardized buffers
- **FLEXIBILITY** – choose from reducing or non-reducing loading buffers
- **ODORLESS** – reduce your proteins without an irritating stench



**Figure 1. SpectraDye Fluorescent Protein Sample Loading Buffer decreases general sample background.** HeLa lysate was electrophoresed then transferred to a PVDF membrane using a semi-dry transfer method. (a) After the transfer, the blot containing HeLa lysate diluted with Laemmli protein sample loading buffer was dried and imaged in the red channel with a CCD imaging system. (c) The blot containing HeLa lysate diluted with SpectraDye protein sample loading buffer was dried and imaged in the red channel with a CCD imaging system. After imaging, the blot was probed with a rabbit anti-STAT1 primary antibody (Millipore #06-501) followed by a donkey anti-rabbit SpectraDye 650 conjugated secondary antibody. (b) Western blot data for the blot containing HeLa lysate diluted with Laemmli protein sample loading buffer shows non-specific background banding. (d) Western blot data for the blot containing HeLa lysate diluted with SpectraDye fluorescent protein sample loading buffer shows a single specific band corresponding to the target protein.

# Protein Sample Loading Buffers

Pre-mixed loading buffers for polyacrylamide electrophoresis

## Ordering Information

Catalog Number	Product	Size
R-03018-B10	Non-reducing protein sample loading buffer (2x)	1 ml
R-03018-B50	Non-reducing protein sample loading buffer (2x)	5 ml
R-03019-B10	Reducing protein sample loading buffer (2x)	1 ml
R-03019-B50	Reducing protein sample loading buffer (2x)	5 ml
R-03146-B10	Odorless Reducing protein sample loading buffer (2x)	1 ml
R-03146-B50	Odorless Reducing protein sample loading buffer (2x)	5 ml
R-03147-B10	Non-reducing protein sample loading buffer (4x)	1 ml
R-03147-B50	Non-reducing protein sample loading buffer (4x)	5 ml
R-03148-B10	SpectraDye™ fluorescent non-reducing protein sample loading buffer (4x)	1 ml
R-03148-B50	SpectraDye™ fluorescent non-reducing protein sample loading buffer (4x)	5 ml



## Related Products

K-12042-D10	WesternBright® Quantum® Western Blotting HRP Substrate, for 1000 cm <sup>2</sup> membrane	100 ml
K-12043-D10	WesternBright® Sirius® Western Blotting HRP Substrate, for 1000 cm <sup>2</sup> membrane	100 ml

### Advansta Corporation

2140 Bering Drive | San Jose, CA 95131

Tel: 650.325.1980 | Fax: 650.325.1904 | Email: [sales@advansta.com](mailto:sales@advansta.com)

Product information: [www.advansta.com/products/protein-sample-loading-buffers](http://www.advansta.com/products/protein-sample-loading-buffers)

Copyright © 2011-2021 Advansta. All rights reserved. The Advansta logo, Quantum®, Sirius®, and WesternBright® are registered trademarks of Advansta Corporation. SpectraDye™ is the trademark of the Company. All other trademarks, service marks and tradenames appearing in this brochure are the property of their respective owners.

[www.advansta.com](http://www.advansta.com)

