

Protein Blot Staining with AdvanStain Products

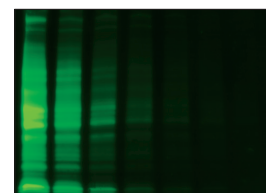
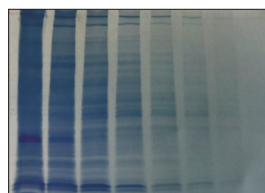
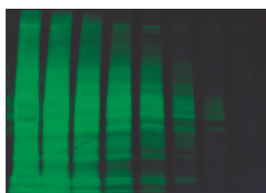
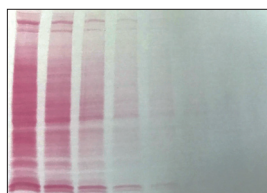
Total Protein Stain Selection Guide

We offer a selection of protein stains for evaluation of transfer efficiency and total protein normalization. **AdvanStain™ Ponceau** is a rapid membrane stain that may be used for qualitative evaluation of protein transfer. **AdvanStain™ Scarlet** is our highest sensitivity stain for evaluation of low abundance targets that are difficult to detect. **AdvanStain™ Iris** may be used to make a rapid qualitative assessment of protein transfer. Additionally, its deep blue color facilitates imaging and improves densitometry measurements. **AdvanStain™ Total** is ideal for total protein normalization with its broad dynamic and linear range.



Product Description	AdvanStain™ Ponceau	AdvanStain™ Scarlet	AdvanStain™ Iris	AdvanStain™ Total
Compatibility	Nitrocellulose/PVDF	SDS-PAGE Gel/ PVDF*	Nitrocellulose/PVDF	Nitrocellulose/PVDF
Detection	Colorimetric/EpiBlue	Cy3/ UV302/ UV365	Colorimetric/EpiBlue	Cy3
LOD (ng BSA)	50	1	10	20
Linearity (µg Lysate)	Qualitative	0.1–1	0.1–5	1–50
Staining Time (min)	12	29*	17	24/19
Pre-Western Processing	Reversible	Reversible	No destaining required	No destaining required
Catalog Number	R-03021-D50	K-11072-B50	R-03072-D25	K-11061-015 K-11062-015

*Stain time is for the membrane



Advansta Corporation

2140 Bering Drive | San Jose, CA 95131

Tel: 650.325.1980 | Fax: 650.325.1904 | Email: sales@advansta.com

Product information: www.advansta.com

Copyright © 2020 Advansta. All rights reserved. The Advansta logo is a registered trademark of the Company. AdvanStain™ is a trademarks of the Company. All other trademarks, service marks and tradenames appearing in this brochure are the property of their respective owners.

www.advansta.com

