

# WesternEaze-Chemi Kit

Rapid, high sensitivity chemiluminescent Western blot kit for protein detection

The **WesternEaze-Chemi Kit** includes all critical reagents required to generate high sensitivity Western blot data for 10 mini blots in one hour. The blocking buffer is specially formulated to increase sensitivity while decreasing overall background. The unique HRP Conjugate amplifies signal to increase sensitivity while minimizing the duration of incubation. The wash solution contains a gentle, non-ionic detergent that rapidly removes non-specifically bound material from the membrane without disrupting the antibody-antigen complex. WesternBright® ECL substrate is included for sensitive, long-lasting and flexible detection using X-ray film or CCD camera. Provided as ready-to-use solutions designed to simplify your Western blot workflow.

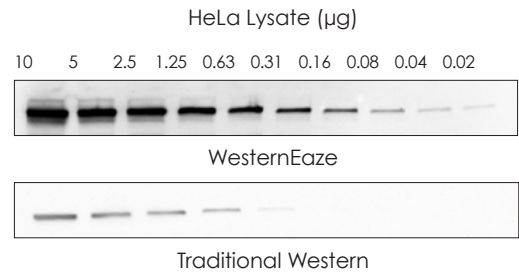


# WesternEaze-Chemi Kit

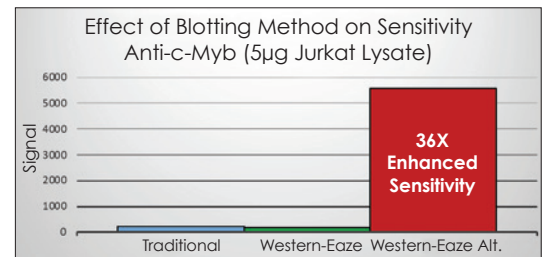
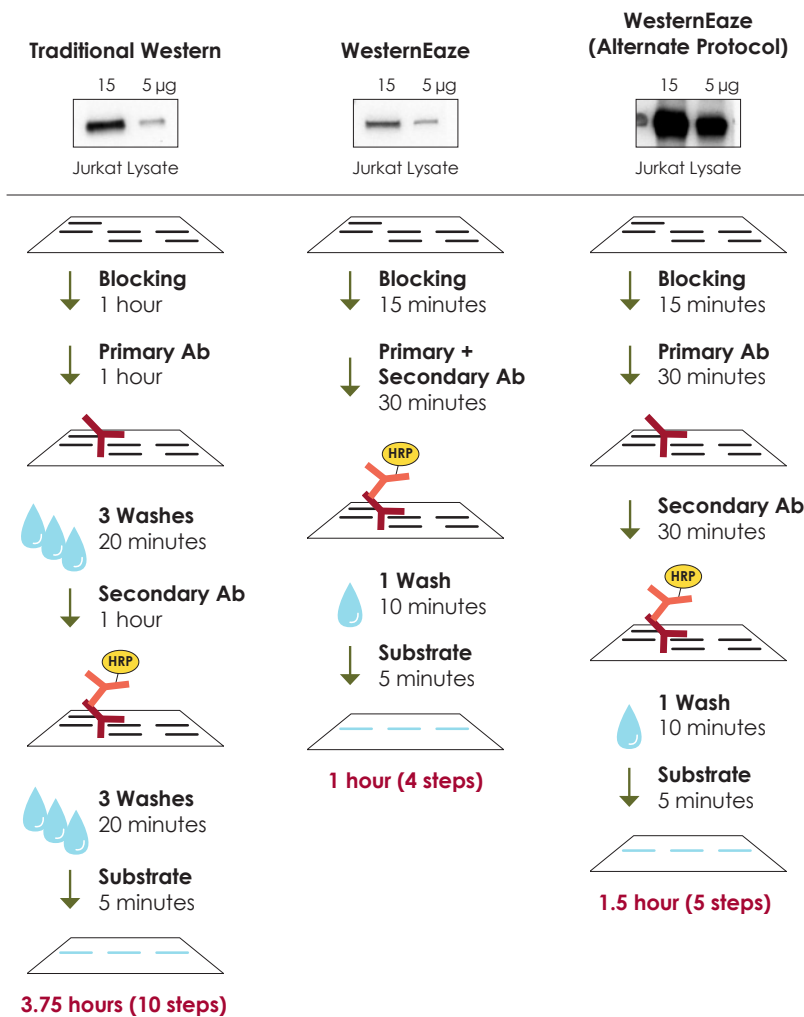
Rapid, high sensitivity chemiluminescent Western blot kit for protein detection

## Maximum sensitivity

**Figure 1. High sensitivity Western blot in one-hour.** Dilutions of HeLa lysate were electrophoresed using SDS-PAGE and the protein was transferred to a nitrocellulose membrane. The blots were probed with 5µg of mouse anti-Vinculin (Boster #MA1103) using either the WesternEaze or Traditional Western blot methods. The blots were developed with WesternBright® ECL Substrate (Advansta #K-12045).



## Optimized protocol for enhanced sensitivity

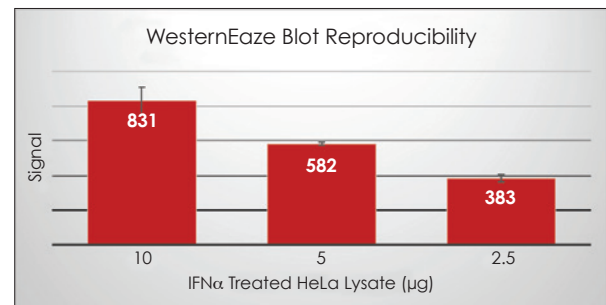
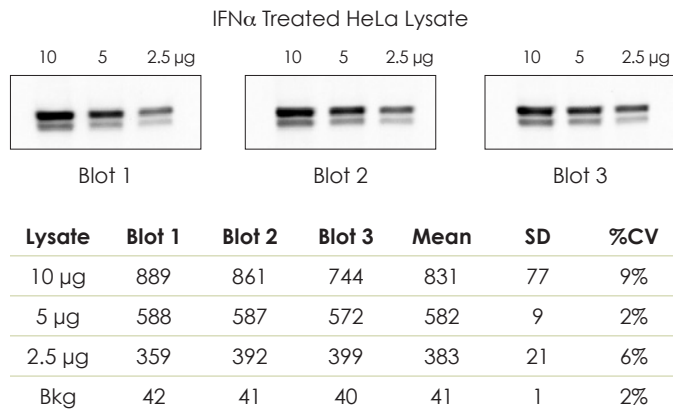


**Figure 2. Alternate WesternEaze protocol significantly enhances sensitivity.** Dilutions of Jurkat lysate were electrophoresed using SDS-PAGE and the proteins were transferred to nitrocellulose membranes. The detection sensitivity for rabbit monoclonal  $\alpha$ -c-Myb (Abcam #ab109127) was determined using traditional, WesternEaze and the alternate WesternEaze blot methods. The blots were developed with WesternBright® ECL Substrate (Advansta #K-12045). The alternate WesternEaze method enhanced sensitivity 36X compared to the standard WesternEaze method.

# WesternEaze-Chemi Kit

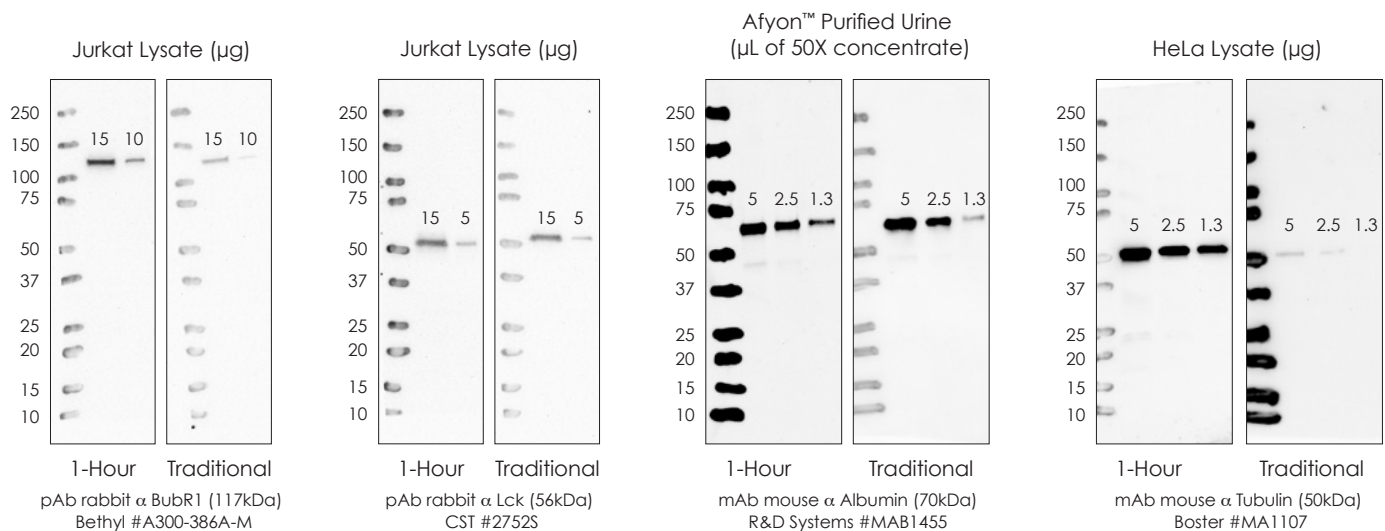
Rapid, high sensitivity chemiluminescent Western blot kit for protein detection

## Reproducible results



**Figure 3. WesternEaze data is highly reproducible.** Dilutions of IFN $\alpha$  treated HeLa lysate were electrophoresed using SDS-PAGE and the proteins were transferred to nitrocellulose membranes. The three independent blots were each probed with 5µg of rabbit anti-phospho STAT3 (CST #4113S). The blots were developed with WesternBright® ECL Substrate (Advansta #K-12045).

## Comparable to traditional Western blot



**Figure 4. Comparable results were generated with WesternEaze and traditional Western blot methods.** Sample dilutions were electrophoresed using SDS-PAGE and the proteins were transferred to nitrocellulose membranes. The detection sensitivity for each target was determined using both a traditional method and the WesternEaze Method. The blots were developed with WesternBright® ECL Substrate (Advansta #K-12045).

# WesternEaze-Chemi Kit

Rapid, high sensitivity chemiluminescent Western blot kit for protein detection

## Advantages

- **RAPID** – complete Western blot in 1 hour
- **REPRODUCIBLE** – fewer hands-on manipulations equate to consistent data
- **CONVENIENT** – contains all critical reagents required to perform a chemiluminescent Western
- **VERSATILE** – kits are available for both mouse and rabbit primary antibodies



## Ordering Information

Catalog Number	Product	Size
K-12054-010	WesternEaze-Chemi Kit, Anti-Mouse	10 blots
K-12055-010	WesternEaze-Chemi Kit, Anti-Rabbit	10 blots



## Related Products

L-08001-010	Pre-cut WesternBright® PVDF-FL, 7x9 cm	10 sheets
L-08118-025	Pre-cut WesternBright® NC 0.45 µm, 6x8.5 cm	25 sheets
L-08117-025	Pre-cut WesternBright® NC 0.22 µm, 6x8.5 cm	25 sheets
R-03090-D50	FlashBlot™ Transfer Buffer, 50X	500mL

## Advanta Corporation

2140 Bering Drive | San Jose, CA 95131

Tel: 650.325.1980 | Fax: 650.325.1904 | Email: [sales@advansta.com](mailto:sales@advansta.com)

Product information: [www.advanta.com/products/WesternEaze-Chemi](http://www.advanta.com/products/WesternEaze-Chemi)

Copyright © 2021 Advanta. All rights reserved. The Advanta logo and WesternBright® are registered trademarks of the Company. FlashBlot™ is a trademark of the Company. All other trademarks, service marks and tradenames appearing in this brochure are the property of their respective owners.

[www.advanta.com](http://www.advanta.com)

